

How the SAP and TCC Partnership Addresses Evolving Supply Chain Challenges

Written by Ronja Nerb
October 30, 2024

Introduction: The Fast-Changing Landscape of Supply Chain Challenges

The only constant within the supply chain space is change. Ever evolving and unpredictable challenges such as geopolitical tensions, inflation pressures, natural disasters, and growing customer expectations are inescapable. In order to achieve business success, operational efficiency, and client satisfaction amidst these uncertainties, companies must adapt by leveraging strategic partnerships and investing in technological advancements.

[Trade Capital Corporation](#)® (TCC) focuses on delivering capital-efficient supply chains™ through their fully integrated VMI platform, 1TCC®, to combat supply chain disruptions. In July 2024, TCC formed their strategic partnership with [SAP](#), a global leader in enterprise software. This collaboration combines TCC's industry leading platform solution and SAP's software, to offer clients solutions that address both immediate needs and future demands in a uniquely challenging supply chain landscape.

The Evolving Supply Chain Landscape: Adapting to a New Reality

Supply chain uncertainty is at an all-time high exacerbated by regulatory changes, global natural disasters, national elections in over 60 countries, increasingly sophisticated cyber-attacks on the software supply chain, and growing fuel and labor costs. Companies need resilient and adaptable supply chains to maintain a competitive edge and thrive amidst these challenges.

Christian Klein, CEO of SAP SE, emphasizes that partnerships like the one SAP has with TCC are crucial:

"As supply chain challenges evolve rapidly, it is crucial for SAP and our partners, like TCC, to stay relevant and innovative to drive decisive impact for our end clients. We expect our partners to bring fresh perspectives and industry-specific expertise to the table, helping us develop solutions that address the most pressing supply chain challenges and deliver tangible impact for our clients."

The partnership between SAP and TCC is revolutionizing supply chain optimization solutions. TCC's clients come from the Automotive, Industrial, Healthcare, and High-Tech industries and overlap strongly with the SAP customer base. 1TCC's patented solutions directly augment SAP's suite of products. Anchoring the 1TCC platform on SAP and leveraging SAP's software to add enriched functionalities and solutions benefits clients' effortless onboarding and seamless process integration for efficient deployment. SAP leveraging 1TCC's deep

technology, practical and industry-specific supply chain needs, ensures the highest level of attention and care towards their mutual client's objectives, helping them achieve the most efficient outcomes and business success. The TCC and SAP partnership delivers solutions that meet both immediate business demands and anticipate future needs.

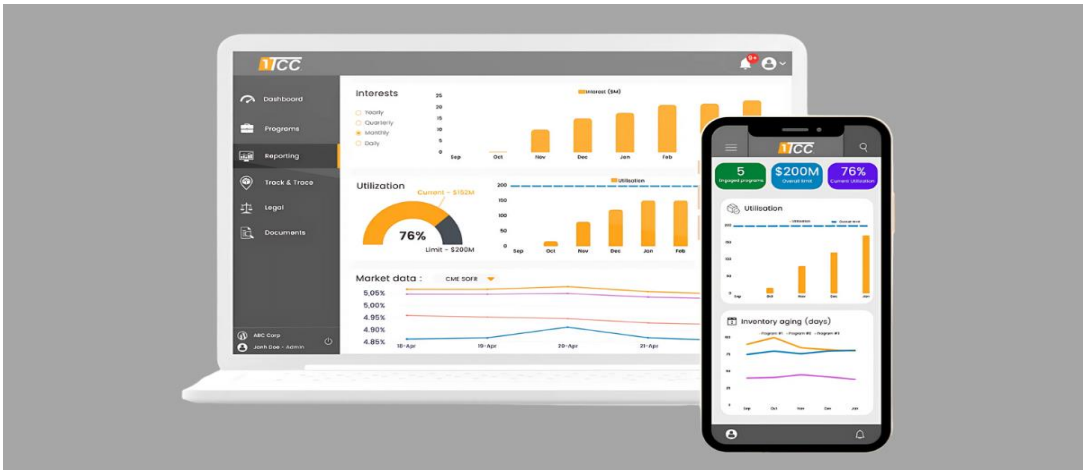
Delivering Innovation Through Collaboration

Strategic partnerships are the key drivers of innovation addressing evolving supply chain demands. After becoming a PartnerEdge member in May 2024, TCC completed their migration to SAP in September 2024, followed by their go live on SAP S/4HANA Public Cloud in a record breaking 67 days. The best practices delivered by SAP along with the required test data helped TCC to quickly prototype the solution and go live with their initial phase. The joint industry-specific expertise of the TCC and SAP partnership shaped and offered groundbreaking innovative solutions for customers.

Innovation is the driving force behind the SAP and TCC partnership. Klein explains:

"Our key consideration behind forming global partnerships like the one with TCC is to harness the power of collaboration and innovation to drive supply chain excellence for our clients. By partnering with TCC, we can leverage their expertise and industry knowledge to offer solutions that address the evolving demands of the supply chain landscape, going beyond traditional client demands."

Speed and innovation are essential for survival and growth in today's supply chain environment. The record-breaking implementation of SAP S/4HANA Public Cloud by TCC is a clear demonstration of this. As Klein puts it, this swift deployment "highlights the competency of TCC and their closeness to the customer," and enables SAP to demonstrate leadership in the fast-growing public cloud sector, emphasizing the customer-centric focus and deep industry knowledge of TCC.



Staying Ahead of Growing Client Demands: AI, Machine Learning, and Blockchain

2024 has seen the rise of many cutting-edge technological advancements, including the adoption of generative AI at enterprise scale. The constant growth of new technologies like generative AI and escalating supply chain uncertainties are driving client demands for real-time data and process automation.

Adopting and leveraging these new tools is the key to innovative solutions and staying ahead of client demands. To meet these rising demands, SAP and TCC focus on integrating cutting-edge technologies like AI, machine learning, and blockchain into their supply chain solutions.

Klein claims that these new technological advancements are reshaping supply chain management:

"Our long-term vision for supply chain management centers around leveraging advanced technologies like SAP S/4HANA and AI to mitigate risk and ensure business continuity for clients, especially in the public cloud segment. These technologies have the potential to revolutionize supply chain management by providing real-time insights, automating processes, and enhancing transparency."

TCC's deep industry expertise, paired with SAP's advanced software capabilities, delivers innovative supply chain solutions that are both technologically advanced and tailored to the specific needs of industries.

Addressing Tomorrow's Supply Chain Challenges Today

As supply chain challenges continue to evolve, SAP and TCC are not just equipped to support the current landscape but are also continuously innovating to prepare for future disruptions, leading the way in delivering significant impact to their clients.

SAP's advanced GenAI and ML frameworks integrated with TCC's supply chain solutions is the next step in providing clients with the ability to navigate and succeed in uncertain supply chain environments, addressing growing issues such as supply chain resilience, sustainability, and economic volatility. Klein emphasizes that SAP and TCC's integrated digital supply chain provides seamless execution and end-to-end visibility:

"Having a single source of truth for your supply chain data across applications is what enables our advanced GenAI, ML, and optimization frameworks to deliver superior results and make our customers' supply chain more resilient."

By synchronizing digital supply chain processes with a customer's ERP in the cloud in real time, SAP and TCC offer clients a reliable and accurate solution for their supply chain data. This integrated and future-forward approach is what sets TCC and SAP apart, positioning them as leaders in enterprise software, where customers are always seeking future-proof solutions.

Conclusion: A Partnership Built for the Future

The SAP and TCC partnership demonstrates how collaboration, innovation and industry expertise combine to deliver a tangible impact in a rapidly changing and turbulent world. Through this strategic partnership, they address not only the supply chain challenges of today, but also anticipate the needs for the future.

In a space where businesses must remain agile, resilient and innovative, SAP and TCC, together are defining a new path that ensures their solutions offer mutual clients the ability to navigate the uncertainties of today's world with confidence. As supply chains continue to evolve, grow and collapse, the TCC and SAP partnership will remain at the forefront of shaping the future of supply chain management.